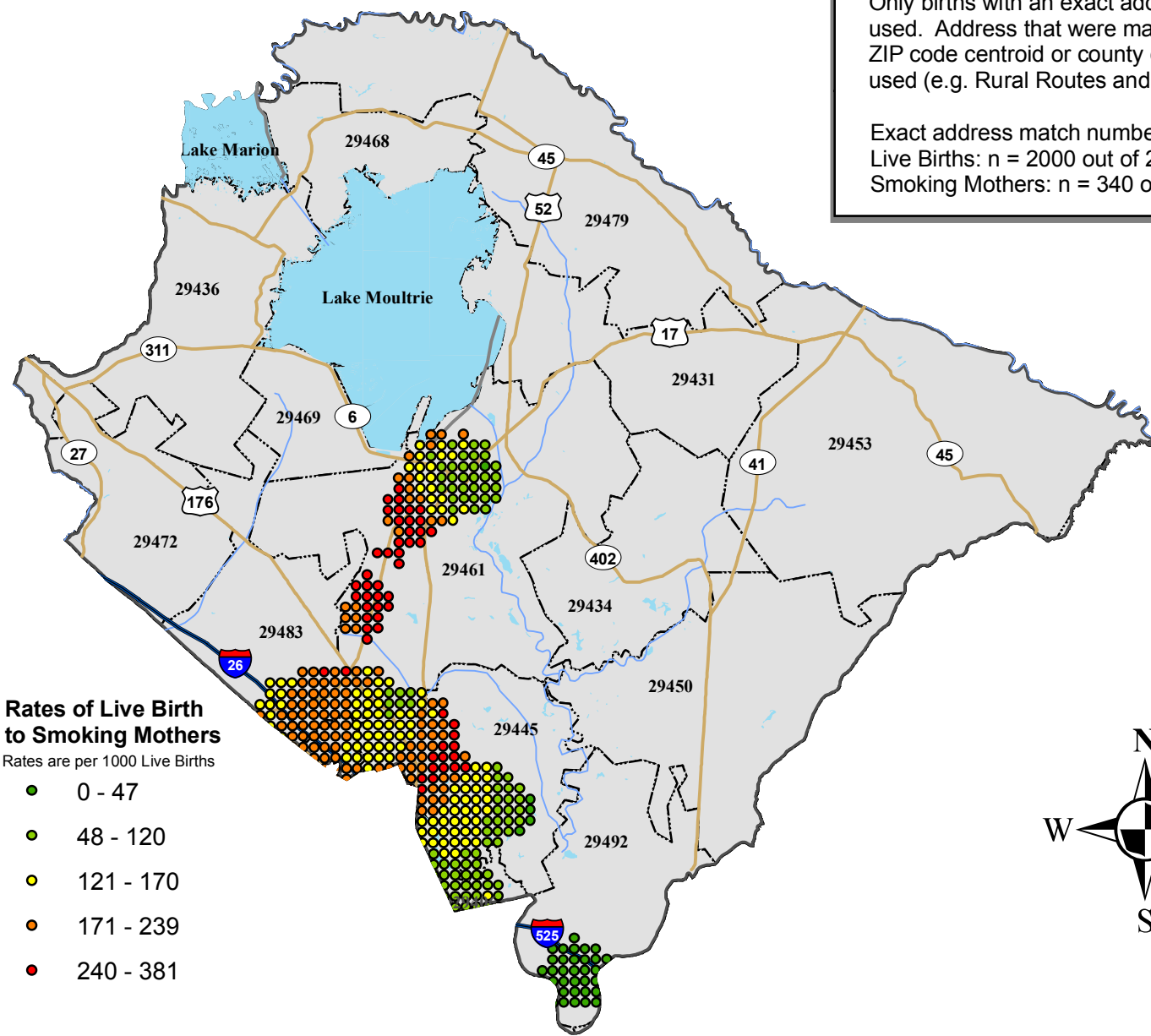
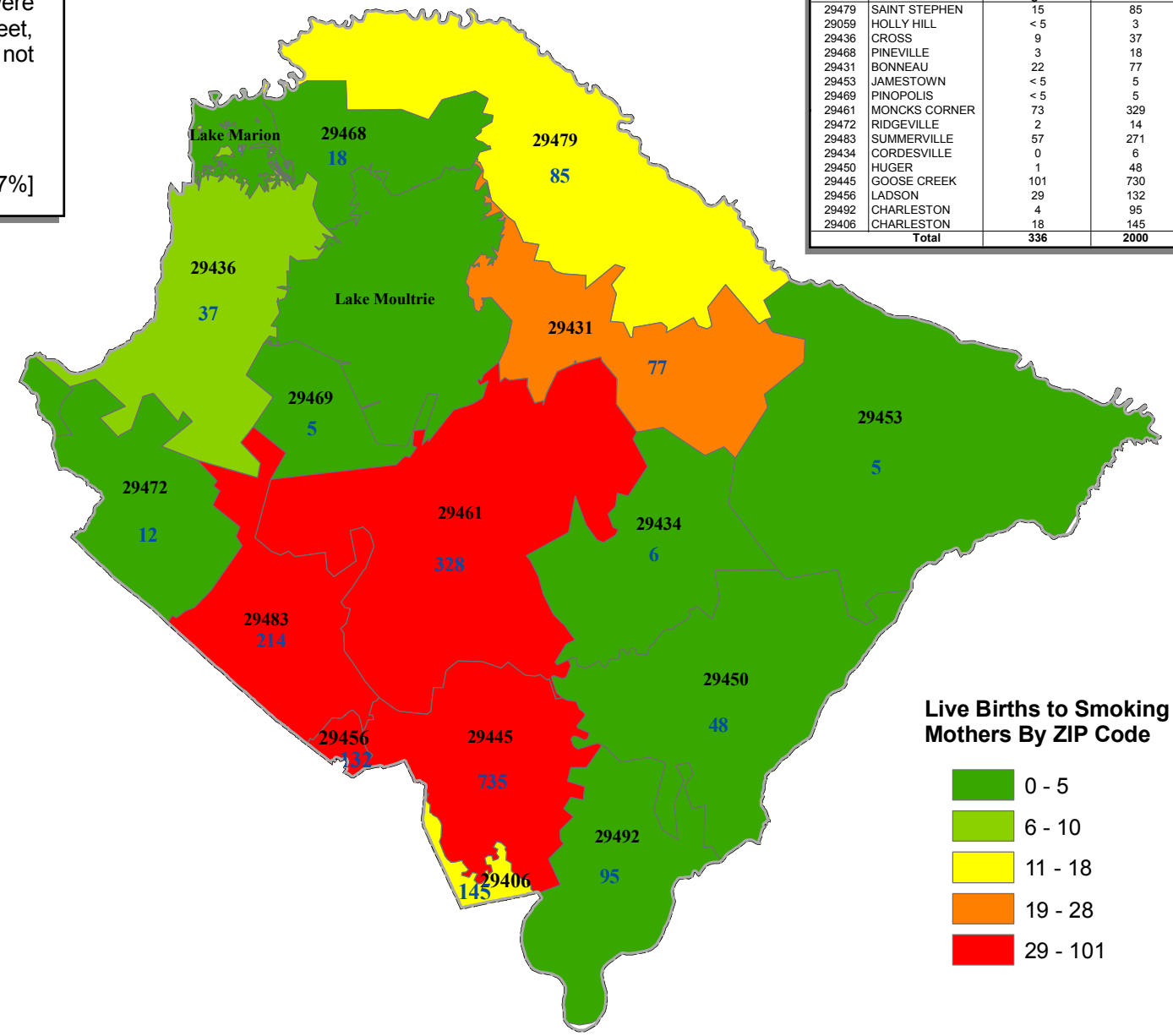


Live Births to Mothers Who Reported Smoking During Pregnancy for 2004 and Who Resided in Berkeley County, South Carolina at the Time of Delivery



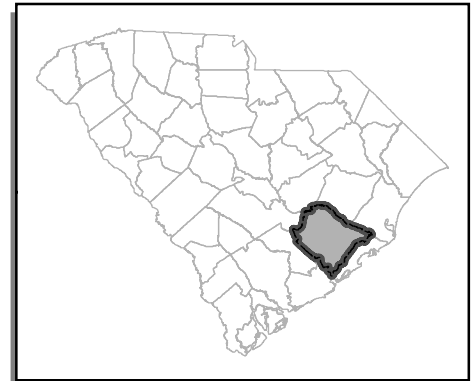
Only births with an exact address match were used. Address that were matched to a street, ZIP code centroid or county centroid were not used (e.g. Rural Routes and PO Boxes).

Exact address match numbers:
Live Births: n = 2000 out of 2335 [85.7%]
Smoking Mothers: n = 340 out of 392 [86.7%]



ZIP Code	Name	Live Births to Smoking Mothers	All Live Births
29479	SAINT STEPHEN	15	85
29059	HOLLY HILL	< 5	3
29436	CROSS	9	37
29468	PINEVILLE	3	18
29431	BONNEAU	22	77
29453	JAMESTOWN	< 5	5
29469	PINOPOLIS	< 5	5
29461	MONCK'S CORNER	73	329
29472	RIDGEVILLE	2	14
29483	SUMMERVILLE	57	271
29434	CORDESVILLE	0	6
29450	HUGER	1	48
29445	GOOSE CREEK	101	730
29456	LADSON	29	132
29492	CHARLESTON	4	95
29406	CHARLESTON	18	145
Total		336	2000

Rates were calculated using the Distance Mapping and Analysis Program (DMAP) developed at the University of Iowa. A 0.5 mile grid that covered Berkeley county was used to calculate the rates. Rates at each grid point were calculated by dividing the sum of numerator (total number of live birth to smoking mothers) and denominator (total number of live birth) events within in a specified radius of 1.8 mile, given by the filter size. To calculate the rate, a minimum denominator size of 40 events was required at each grid point.



Numeric values in blue represent total number of live births within a specific ZIP code area. Only live births with an exact address match were used for this analysis.

