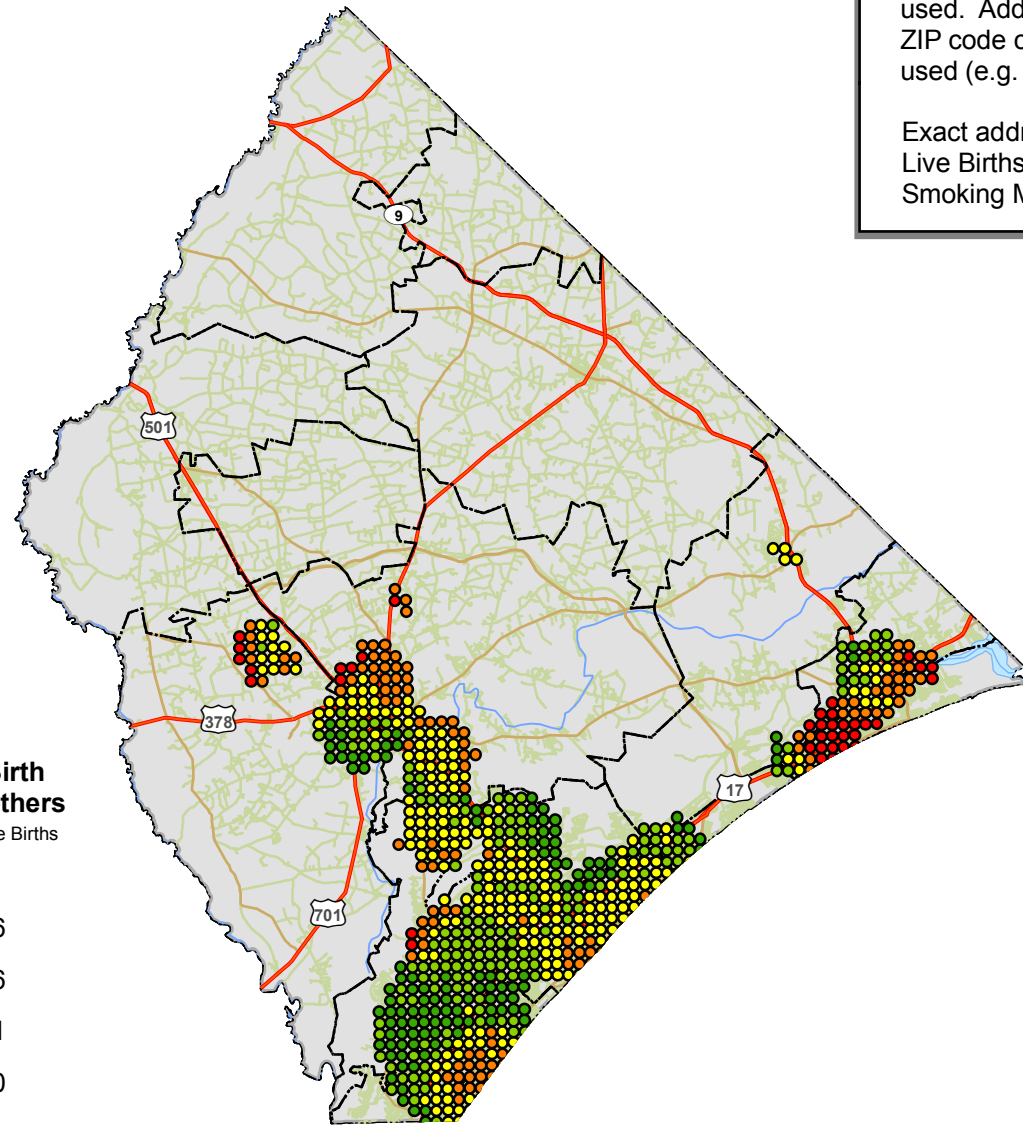
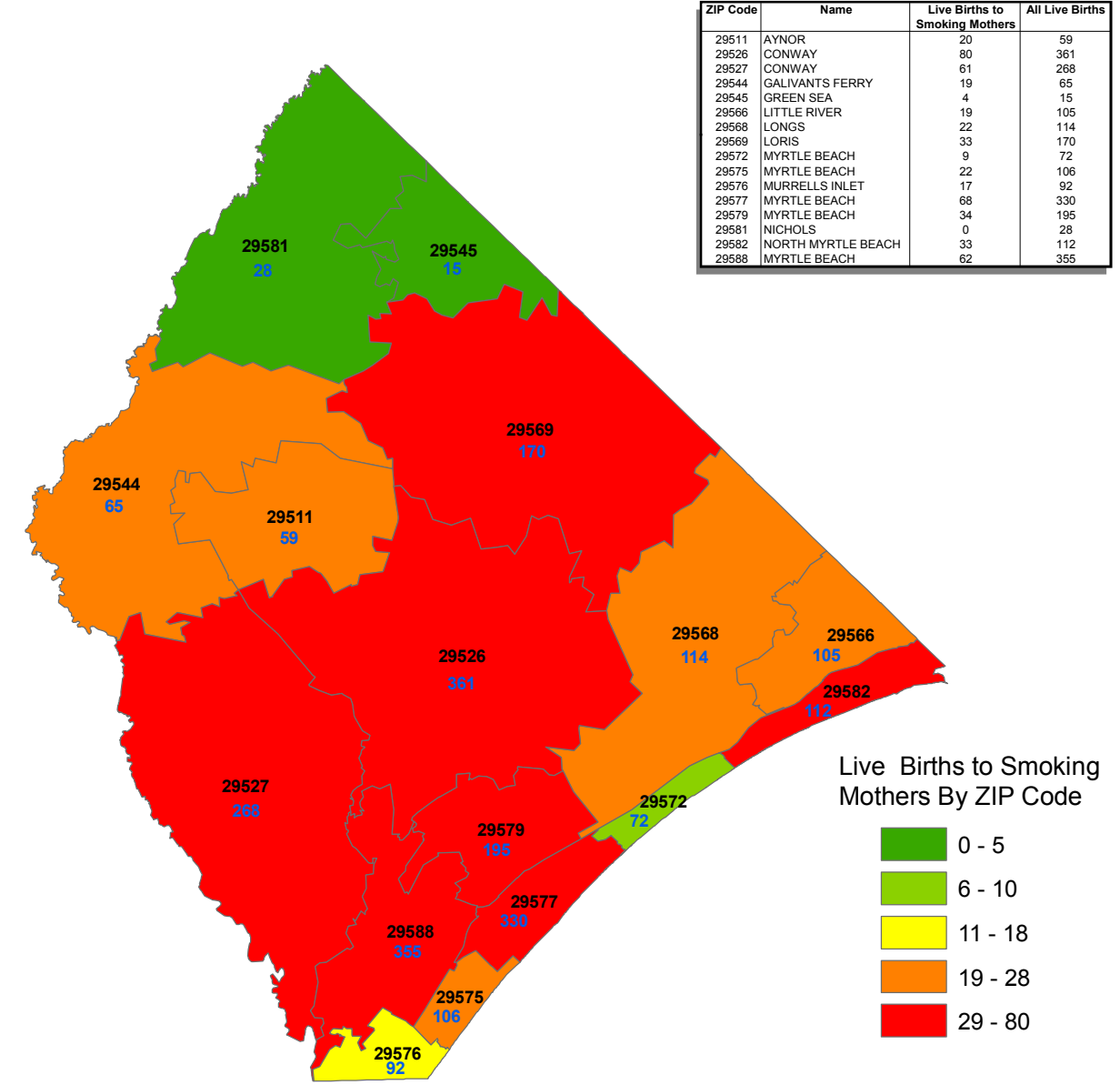
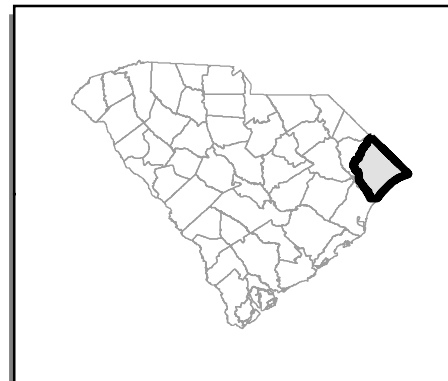
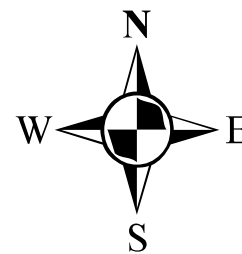


Live Births to Mothers Who Reported Smoking During Pregnancy for 2004 and Who Resided in Horry County, South Carolina at the Time of Delivery



Only births with an exact address match were used. Address that were matched to a street, ZIP code centroid or county centroid were not used (e.g. Rural Routes and PO Boxes).

Exact address match numbers:
Live Births: n = 2447 out of 2803 [87.3%]
Smoking Mothers: n = 503 out of 576 [87.3%]



Numeric values in blue represent total number of live births within a specific ZIP code area. Only live births with an exact address match were used for this analysis.

Rates were calculated using the Distance Mapping and Analysis Program (DMAP) developed at the University of Iowa. A 0.5 mile grid that covered Horry county was used to calculate the rates. Rates at each grid point were calculated by dividing the sum of numerator (total number of live birth to smoking mothers) and denominator (total number of live birth) events within in a specified radius of 1.8 mile, given by the filter size. To calculate the rate, a minimum denominator size of 40 events was required at each grid point.

