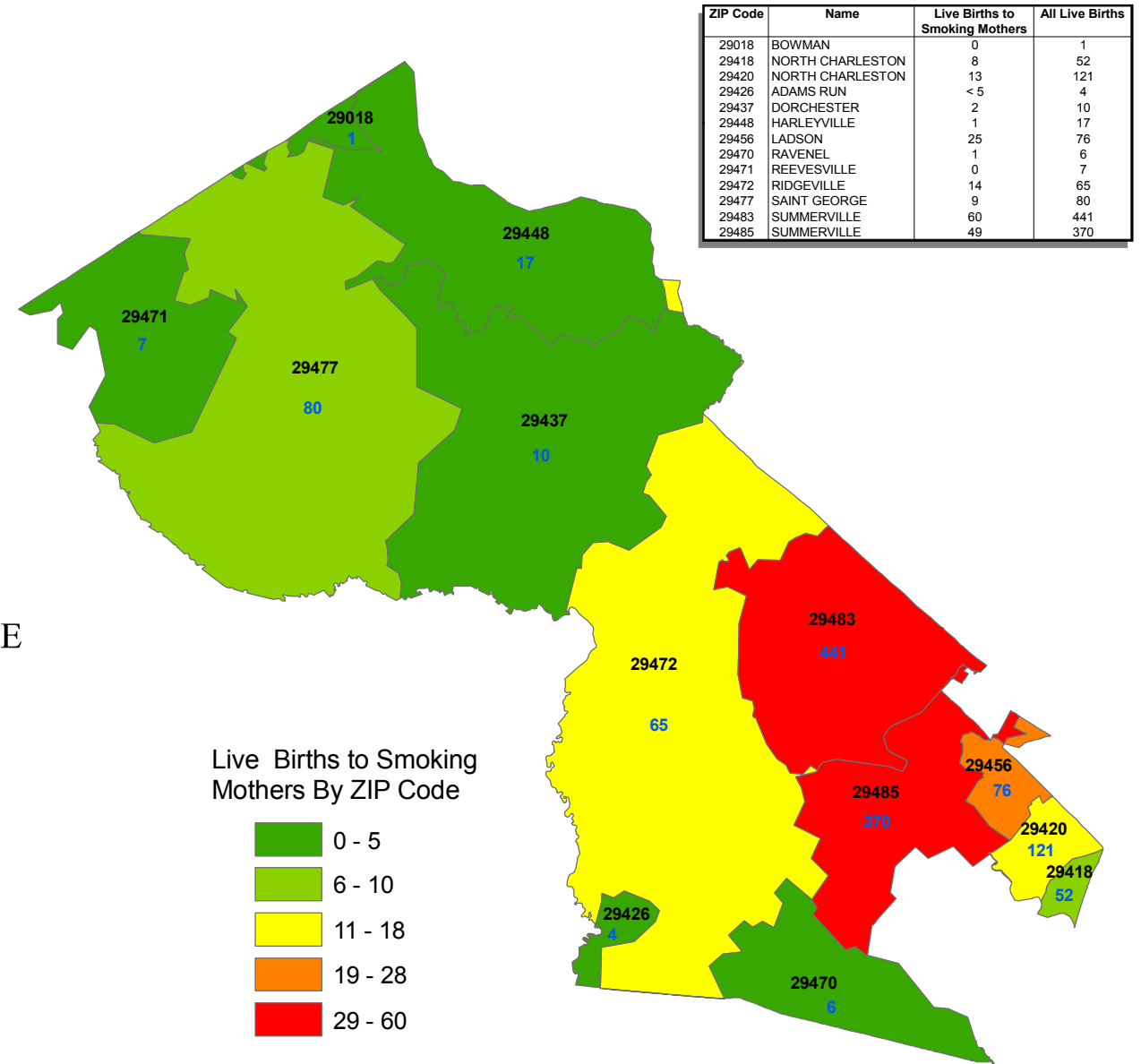
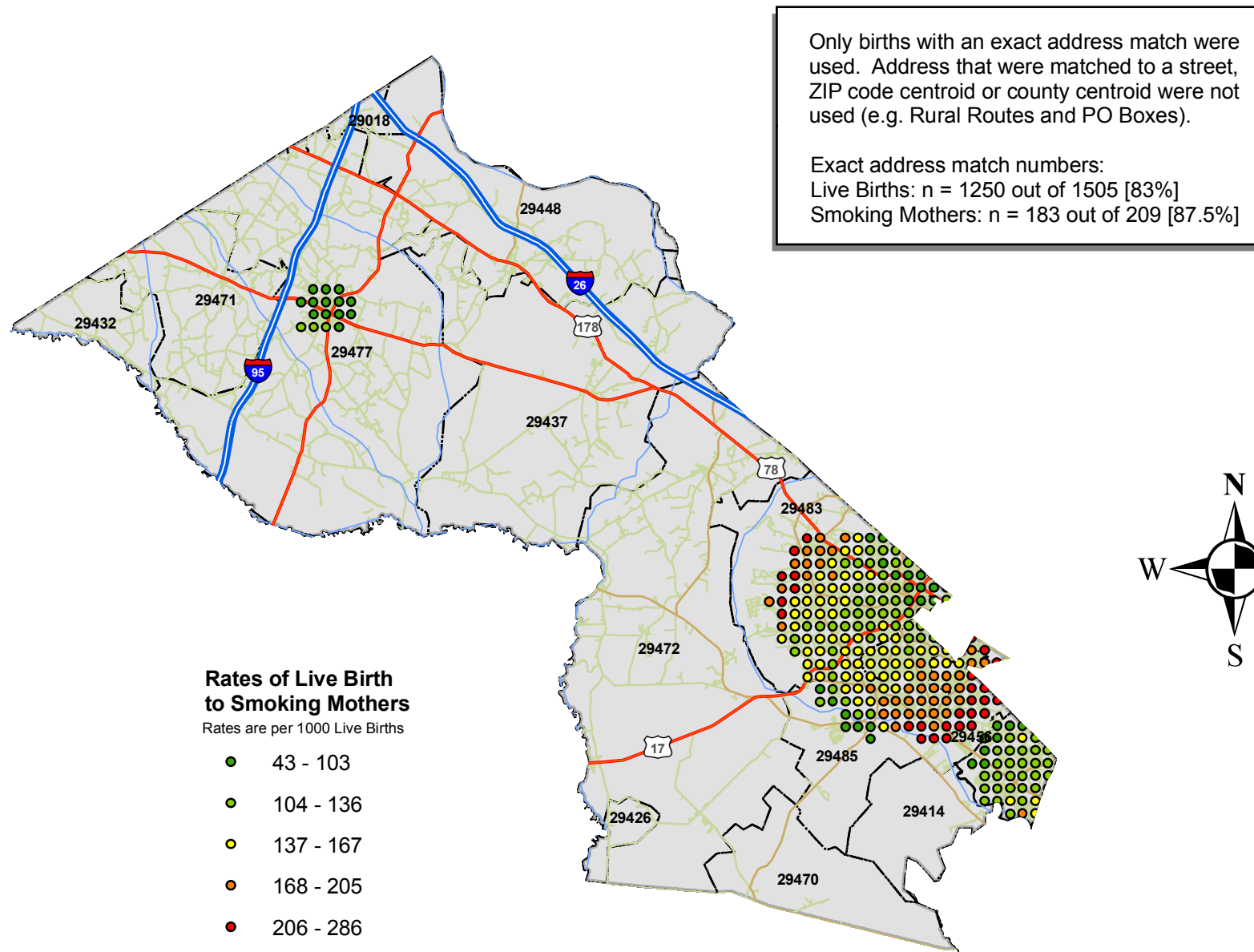
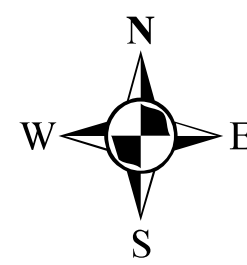


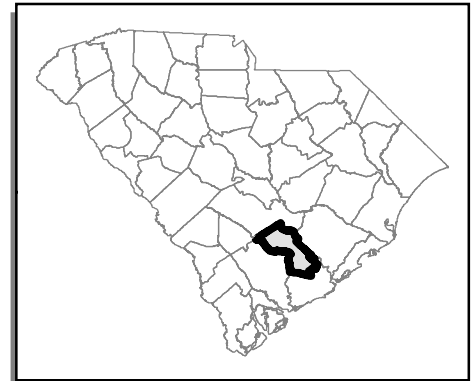
Live Births to Mothers Who Reported Smoking During Pregnancy for 2004 and Who Resided in Dorchester County, South Carolina at the Time of Delivery



ZIP Code	Name	Live Births to Smoking Mothers	All Live Births
29018	BOWMAN	0	1
29418	NORTH CHARLESTON	8	52
29420	NORTH CHARLESTON	13	121
29426	ADAMS RUN	<5	4
29437	DORCHESTER	2	10
29448	HARLEYVILLE	1	17
29456	LADSON	25	76
29470	RAVENEL	1	6
29471	REEVESVILLE	0	7
29472	RIDGEVILLE	14	65
29477	SAINT GEORGE	9	80
29483	SUMMERVILLE	60	441
29485	SUMMERVILLE	49	370



Rates were calculated using the Distance Mapping and Analysis Program (DMAP) developed at the University of Iowa. A 0.5 mile grid that covered Dorchester county was used to calculate the rates. Rates at each grid point were calculated by dividing the sum of numerator (total number of live birth to smoking mothers) and denominator (total number of live birth) events within in a specified radius of 1.8 mile, given by the filter size. To calculate the rate, a minimum denominator size of 40 events was required at each grid point.



Numeric values in blue represent total number of live births within a specific ZIP code area. Only live births with an exact address match were used for this analysis.

